

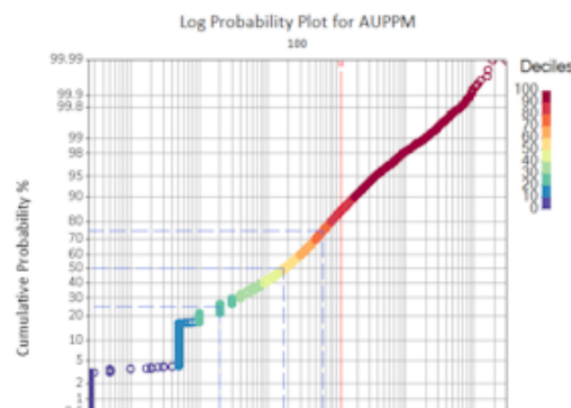
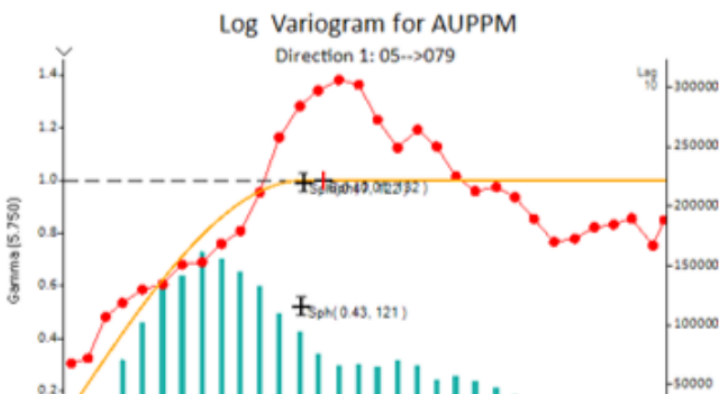
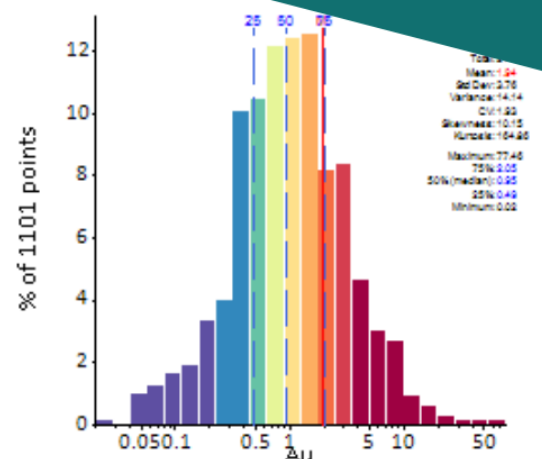
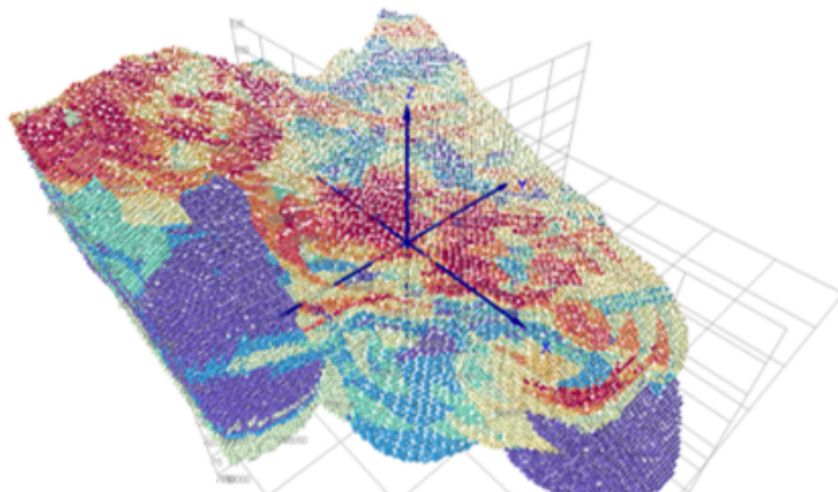
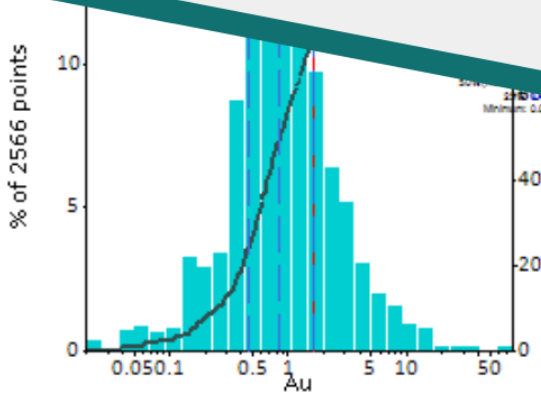
Created by Geologists, for Geologists

SUPERVISOR

The Ultimate Companion for
Resource Estimation
Professionals

Release Notes

Supervisor 8.15.2



© Copyright 2023 Datamine Software ('Snowden Optiro')

All Rights Reserved Confidential and Proprietary

Published: Monday, 27 November 2023

Legal Disclaimer

The product described in this documentation may be connected to, and/or communicate information and data via, a network interface, which should be connected to a secure network. It is your sole responsibility to ensure a secure connection to the network and to establish and maintain appropriate measures (such as but not limited to the installation of firewalls, application of authentication measures, encryption of data, installation of antivirus programs, etc.) to protect the product, the network, your systems, and the interface against any kind of security breach, unauthorised access, interference, intrusion, leakage, damage, or corruption or theft of data. We are not liable for damages or losses related to any such security breach, unauthorised access, interference, intrusion, leakage, damage, or corruption or theft of data.



Contents

What's New in Supervisor 8.15.2?	4
Feature Highlight	5
SQL Database Connection Tool	5
New Features	6
Enhancements	7
Defect Fixes	9



What's New in Supervisor 8.15.2?

Supervisor continues to deliver high quality and accessible geostatistics with the launch of version 8.15.2. Building on its robust suite of tools, this new version introduces many valuable quality-of-life improvements designed to enhance user efficiency and provide deeper insights into their data.

Powerful enhancements in this release include an easier and more efficient way to generate Quantile–Quantile (QQ) plots, a bulk export option for Global Topcut components, 3D visualisation for improved spatial context, and an upgraded SQL Database connection tool catering to broader and more flexible data import needs. These improvements are tailored to streamline your resource workflows and offer a more integrated experience in Supervisor.

These features are just a highlight of the functionalities that have been introduced in the latest version. Supervisor maintains its commitment to delivering comprehensive and sophisticated geostatistical analysis solutions within innovative and accessible toolsets. With these latest advancements, we ensure our users stay ahead in efficiently evaluating their geological data with the utmost confidence.

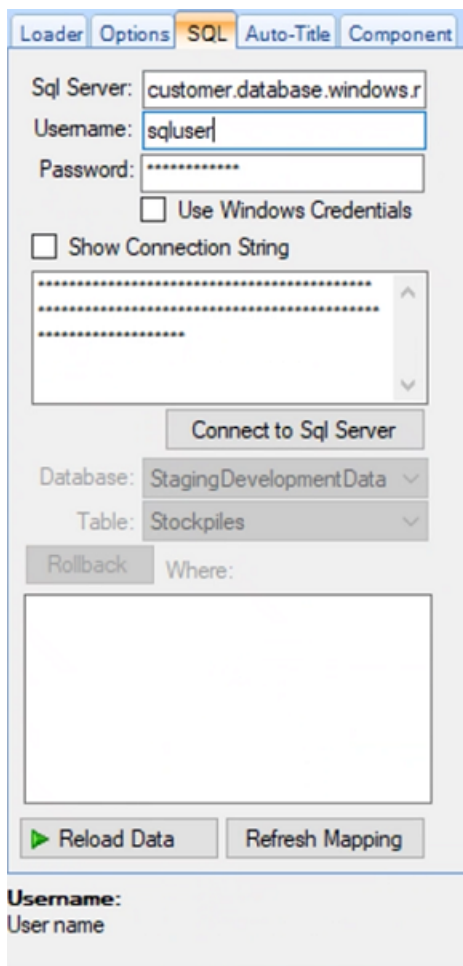


Feature Highlight

SQL Database Connection Tool

Supervisor's re-engineered SQL database connection tool offers simplified connectivity to both local and remote Microsoft SQL databases. It enables seamless access to cloud-based and customer environment databases, eliminating the requirement of storing databases locally.

Simply add data into Supervisor as you would any other data type, and select the SQL option to open the new SQL tab. From this tab you can configure and connect to your SQL server using a connection string.



New Features

Bulk Generation of QQ Plots

Generate QQ plots in bulk for sibling data nodes in project trees using the 'All Siblings' function, creating all possible pairwise plots at once.

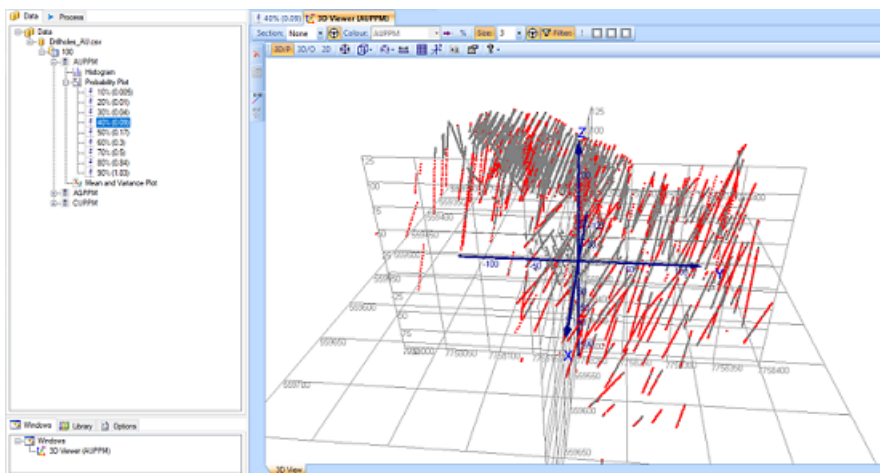
For domain-specific analysis, the 'All <Assay>' option will efficiently produce QQ plots for all domain pairs across the chosen Assay data, supporting domain by domain project setups.

Bulk Export of Global Topcut Components

Select and bulk export multiple Global Topcut components via the new right click menu option, simplifying the process of managing and sharing topcut analysis results.

Enhanced 3D Visualisation

The Global Topcut and Threshold Plot components now come with 3D viewer support, enabling users to visualise affected samples and topcut values directly within a spatial context, enhancing interpretation and decision-making.



Revamped SQL Database Connection Tool

The reengineered SQL Database connection tool now supports seamless integration with both local and remote SQL databases, guaranteeing a more flexible and reliable data import workflow.

Enhancements

- Additional options for generating multiple QQ-Plots have been added to the right-click Add menu.
- Added export functionality to the right-click menu of Global Topcut components. Multiple components can now be exported at once.
- Users no longer have to press Enter after typing in a field to finalise the input.
- When the Global Topcut component is selected, the Context 3D window now shows the samples above the topcut value in red, with the remaining samples display as grey.
- The KNA, Cross-Validation, Grade Control DH Spacing and Predicted GT Curve components can now be added to stand-alone variograms. The Variogram will be treated as an omnidirectional variogram model for all calculations.
- The default Compatibility option for Rotation components has been set to Datamine.
- Data that falls within the red highlighted section of the Threshold Probability Plot also displays as red in the Context 3D window.
- Multiple Global Topcut components can now be added to a single node.
- The latest online help documentation can now be launched directly from the Help menu within Supervisor.
- New context sensitive help documentation can be accessed by pressing F1 with any component selected.
- A Table of Structures has been added that can be toggled on in the Stats tab of a variogram model.
- Variograms can now be exported directly to .vrg format.
- Supervisor now allows Vulcan BMF files to be imported.
- Supervisor no longer needs to be reopened after checking out a new license.
- The border and transparency of the stats table can now be altered in the Stats tab.
- Users can now move and choose the location of the centroid before processing results during KNA and Drillhole Spacing Analysis.
- Users are no longer required to restart Supervisor when cancelling and rerunning a conditional simulation.
- Users can now connect to and import from a MSSQL database that is hosted on a remote server.
- The time required to cancel processes has been reduced.



- When displaying points on a box plot, the point jitter will no longer be randomised while adjusting the axis controls.
- Angular Tolerance can now be displayed on variogram models and can be toggled on in the Draw tab.
- An upper tail quick-view checkbox has been added to Tail Models that allows users to zoom into the area of interest, perform the fitting, and then zoom back to the global view.



Defect Fixes

- Conditional simulations that are missing required block models will now give informative error messages, instead of generic error messages.
- Fixed an issue that caused grade tonnage curve calculations to be incorrect.
- Fixed an issue preventing different simulation sets being run in multivariate simulation if different seeds are used.
- Fixed an issue that could cause the auto-fit to fail for certain data configurations.
- The ZONE field is no longer included in variogram exports.
- The import point data “Vulcan BMF” is now correctly labelled as “Vulcan Map”.
- Fixed an issue where the scatterplot would produce an error when trying to plot the regression line.
- Fixed a graphical error in the probability plot, triggered by toggling the Gaussian frequencies option or the stats table on and off.
- Fixed an error that would occur when colouring a scatterplot by a column attribute.
- Fixed an issue in projects with multiple domains, that caused the title of the validation QQ-plot to display the incorrect domain.
- Fixed an issue that caused the reblocked results for the multivariate simulation component to incorrectly use the name of an attribute in the multivariate data set.
- Fixed an issue preventing the export of stats and confidence intervals for some reblocked models.
- The kriging variance reported in the cross-validation component when using normal scores transformation no longer remains the same after selecting the option “use back-transformed results”.
- Fixed an issue that occurred when applying a filter to a domain that caused the domain name to change.
- The “Apply Cutoffs” button can no longer be selected in grade probability plots if cutoffs are manually typed.
- Conditional simulation now selects the matching domain column if the paired block model has more than one domain column mapped.
- Statistics reported for each threshold in the log probability plot no longer revert to the global statistics and display correctly for each threshold.
- Log probability plots inserted beneath global topcut analyses now produce consistent results.



- Block sizes created from a block model in a multivariate simulation now automatically update the block size of the simulation.
- Log probability plots will always update before their related thresholds to ensure correct threshold values.
- Fixed an issue that prevented the Despik tab from appearing when data is dragged and dropped into the data loader.
- Fixed an issue that caused Surpac rotations to produce incorrect results.



Datamine enables efficient and sustainable mining through the application of world-leading technology and services.

Read the Docs

docs.dataminesoftware.com

Get in Touch

sales@dataminesoftware.com

www.dataminesoftware.com/support



Find Us

AUSTRALIA | BRAZIL | CANADA | CHILE | CHINA |
ECUADOR | GHANA | INDIA | INDONESIA | KAZAKHSTAN |
MALAYSIA | MEXICO | MONGOLIA | PERU | PHILIPPINES |
SOUTH AFRICA | TURKEY | UNITED KINGDOM | USA |
UZBEKISTAN



www.dataminesoftware.com



SUPERVISOR



DATAMINE